



Sussidiario per immagini



ARASAC



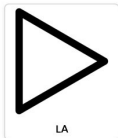
Autore del simbolo: Sergio Patao. Per conto di: ARASAC (<http://caatodu.es/arasac/>). Con Licenza: CC(BY-NC-SA)

## La Montagna

Progetto : CTS - Novara  
Ordine di Scuola : Scuola Primaria  
Area disciplinare : Geografia  
Realizzato da : I.C. Cronilde Musso "Don Milani"

Difficoltà Apprendimento : Deficit Cognitivo/**Comunicativo**  
: Ritardo mentale

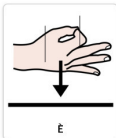
Classe 3 Alunno con ritardo mentale medio e disturbo grave del linguaggio



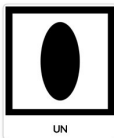
LA



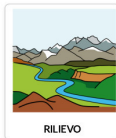
MONTAGNA



È



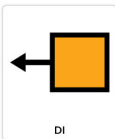
UN



RILIEVO



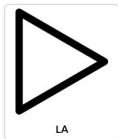
PIÙ ALTO



DI



600 METRI



LA



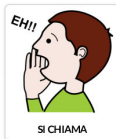
PUNTA



DELLA



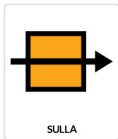
MONTAGNA



SI CHIAMA



CIMA



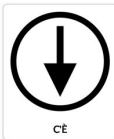
SULLA



CIMA



ALTA



C'È



IL



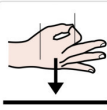
GHIACCIAIO



LA



VALLE



È



LO



SPAZIO



FRA



DUE



MONTAGNE



LA



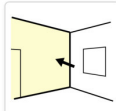
MONTAGNA



HA



DUE



LATI



CHIAMATI



VERSANTI



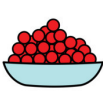
IN



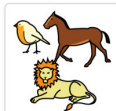
MONTAGNA



VIVONO



MOLTI



ANIMALI:



+s

CERVI



+s

SCIATTOLI



ORSI



VOLPI



E



+s

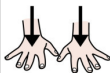
GUFI



IN



MONTAGNA



CI SONO



MOLTE



PIANTE:



PINI



E



+s

ABETI